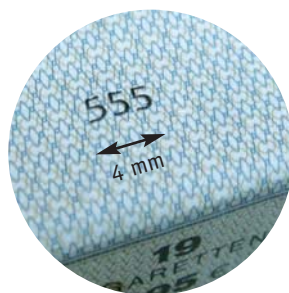
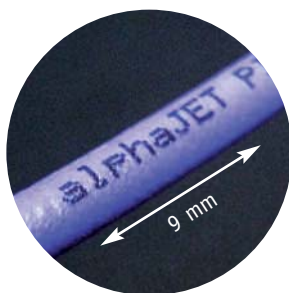


alphaJET pico Continuous InkJET system

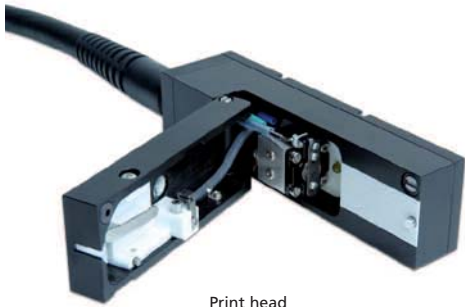


- Miniature codes for the electronics, cosmetics, pharmaceutical and cable markets
- Tiny, crisp clear text from 0.7 mm to 10 mm
- 2D data matrix codes
- Up to 5 lines of text
- Easy network integration
- Low emissions
- Space-saving, compact design
- IP 65 rated for challenging environmental conditions



... the leading manufacturer of printing, coding and marking systems

alphaJET pico Continuous InkJET system



Print head



Touchscreen control unit

alphaJET pico is a member of the proven alphaJET series and is designed to print tiny fonts with excellent readability. Uniform droplet formation ensures precision codes whether text, graphics or 2D data matrix barcodes. The alphaJET pico is designed specifically for applications where lots of information is required or where space is extremely limited. For example: coding small components, fibre or cable, cosmetics, toiletries and pharmaceuticals.

Housing

- Modern Design
- IP 65 rated construction
- Operating temperatures +5° to +45°C
- Stainless steel
- Optional: integrated UPS (uninterruptable power supply)

Touch screen display

- 10.4" TFT touch screen display with user-friendly interface
- Durable, tilting, removable display
- Solvent resistant
- Graphical interface (WYSIWYG)

Ink system

- Solvent recovery as standard: only 2 ml/hr at 20°C
- Modular and easy to access
- Maximum uptime due to robust components
- Easy, time-saving maintenance
- Efficient and ecologically friendly
- No ink or solvent cartridges

Print head

- Optimized design with easy-clean hinged lid
- Nozzle lock -> Quick start up and shut down routines
- Head heater -> uniform droplet formation
- Built-in strobe-light and visual inspection window for quick drop formation checks

Interfaces and I/O standard

- Ethernet
- 2 x RS232
- 2 parallel inputs (product sensor and encoder)
- Remote socket
- Digital I/O ports
- Alarm relay
- USB
- Optional: 4 color alarm beacon
- Optional: bespoke customer software

Technical data

Dimensions:	Control unit: 320 x 320 x 700 mm (incl. operator terminal) Print head: 40 x 40 x 145 mm (L x W x H)
Print system:	Continuous ink jet system, comprising a control unit and a printing unit
Ink system:	1-litre bottles for ink and solvent, easy to change. Solvent consumption only 2 ml/h at 20°C thanks to solvent recovery system. No requirement for compressed air
Ink types:	dye-based ink, suited to your individual requirements, depending on product material and application
Working conditions:	Operating temperature: +5° to +45°C, max. 90% relative air humidity, non-condensing
Hardware:	The control unit and printing unit operate independently of each other. This allows additional printing units to be controlled from one master printer. Peripheral equipment can be controlled and synchronised via defined interfaces
Text features:	Automatic time and date function, continuous numbering, barcodes, data matrix codes, logos etc.; printing of True Type fonts
Fault diagnosis:	Automatic diagnostics displayed in plain text
Print speed:	Up to 3500 characters per second
Print head distance:	3 - 10 mm

License:	Standard	Professional
Print resolution:	24 dots	32 dots
Type height:	0.7 - 10 mm	4 lines (5x5 matrix)
		5 lines (5x5 matrix)

Connected loads: 86 - 264 V ± 10%, 50 - 60 Hz, maximum power consumption 1.0 / 0.5 A
Safety standard: Ink return control; automatic viscosity and ink level control; remote monitoring of printing errors; separation of the electronics and ink system; practically zero emissions

Subject to technical and design changes. E&OE

